

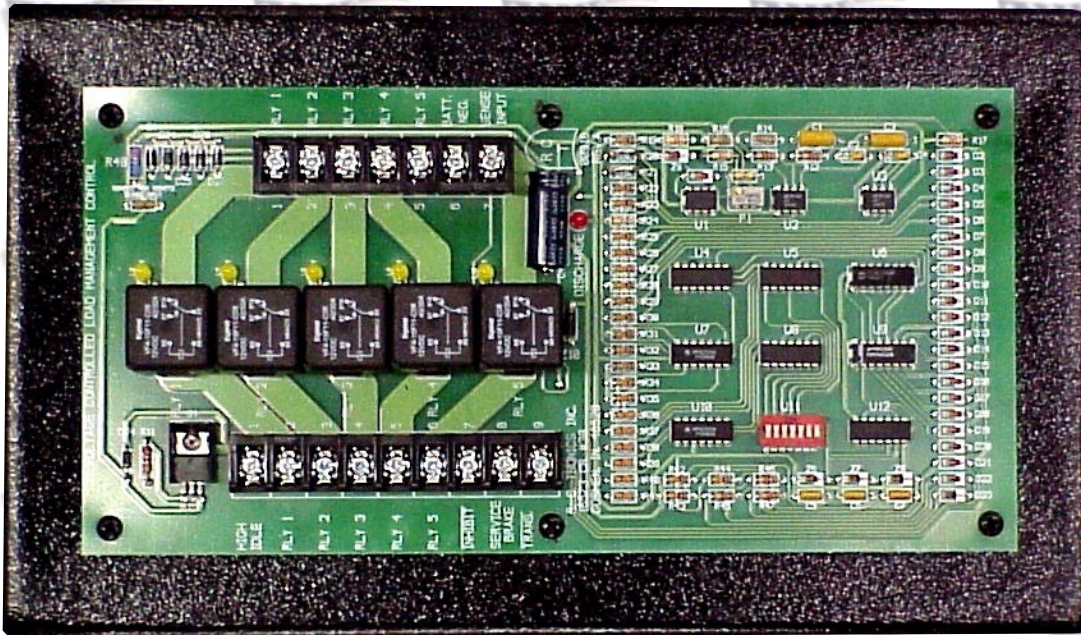
R. C. Tronics Incorporated

Specializing In Electronic Controls

**2573 East Kercher Road
Goshen, Indiana 46528
Toll Free 1-866-457-7790**

**Phone 1-574-642-3857
Fax 1-574-642-3858
<http://www.rctronics.com>**

RCT-00918 Load Management Control



This controller will monitor system voltage. Once it displays a low voltage, indicated by red led, unit will output +12 vdc @ 4 ampere maximum, on 30 second interval, which can be connected to idle up engine controls thereby increasing alternator output. If continued low voltage is detected unit will remove up to five loads rated 12 vdc @ 30 ampere each. As voltage begins to increase indicating system battery is charging. The unit will begin to reapply the loads it has removed, but do on a three-minute time cycle.

The controller has amber indicators showing the status of the relays.

Controller has seven position dip-switch; switch 1 thru 5 will inhibit relays 1 thru 5. (operating any one of the first five switches will cause that load not to be removed) Switch 6, "Automatic Reloading", (operating this switch will cause the system not to reload) Switch 7, Inhibits System operation. Unit is shipped with each relay enabled, auto reload enabled and system enabled.

Unit power is supplied from relay 1 through 5 inputs. The first load to be removed will be relay 1, then relay 2 ECT. For the control to begin shedding loads it must be connected to a sensor, indicating that the transmission is in "PARK", which is taken to battery negative.

Applying 12 VDC signal to, "Service Brake Input" will cause system to reapply all loads and then begin to remove loads again.

In addition there is a terminal "INHIBIT" a switch closure to battery negative will reapply all loads and not permit load shedding.

Dimensions 2 ½ x 8 x 13 ½ Weight 27 oz.