

R. C. Tronics Incorporated

2573 East Kercher Road
Goshen, Indiana 46528
Toll Free 1-866-457-7790

**EPC-7 Ambulance
Add A Power Relay**

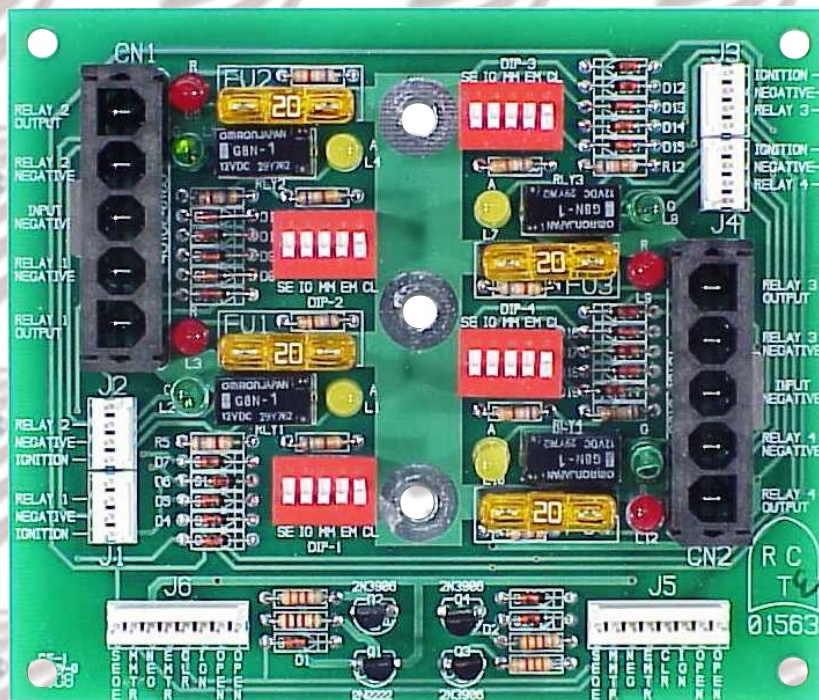
Phone 1-574-642-3857
Fax 1-574-642-3858
Http://www.rctronics.com

RCT-01563 Auxillary Power Card. RCT-01564 Switch and Printed Circuit Board

This four relay power relay card mounts on center bus bar on the RCT-01497 'AMBULANCE POWER CENTER'. The power relays are activated with; ON/OFF or ON/OFF/ON, momentary or maintained switches. Five major groups may be selected for relay operation with dip switch. They are as follows, "System Enable", "Ignition", "Module Master", "Emergency Master" or "Clearance Lights).

**Relay #2 Output
Relay #2 Negative
Input Negative
Relay #1 Negative
Relay #1 Output**

**Relay #2
Interface
Relay #1
Interface**



**Relay #3
Interface
Relay #4
Interface**

**Relay #3 Output
Relay #3 Negative
Input Negative
Relay #4 Negative
Relay #4 Output**

**J6-1 Open
J6-2 Open
J6-3 Ignition (Source)
J6-4 Clearance Light (Source)
J6-5 Emergency Master (Sink)
J6-6 Negative
J6-7 Module Master (Sink)
J6-8 System Enable (Source)**

**J5-1 Open
J5-2 Open
J5-3 Ignition (Source)
J5-4 Clearance Light (Source)
J5-5 Emergency Master (Sink)
J5-6 Negative
J5-7 Module Master (Sink)
J5-8 System Enable (Source)**

J6 Receives Input from RCT-01479,Data Connector J7, Ambulance Power Center.

J5 of this PCB is a parallel connector of J6 of this PCB,used to add additional Power Relay, RCT-01563.A total of four cards may be added or 16 power relays

