

# R. C. Tronics Incorporated

Specializing In Electronic Control

2573 East Kercher Road  
Goshen, Indiana 46526  
Toll Free 1-866-457-7790

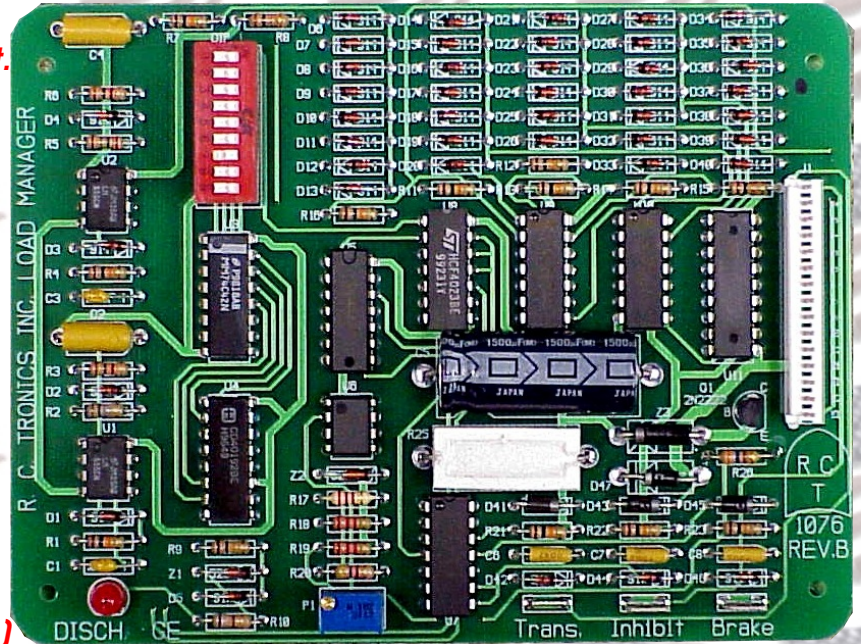
Phone 1-574-642-3857  
Fax 1-574-642-3858  
<http://rctronics.com>

## RCT-01076 Load Manager

**Setting "ON" at switches 1 thru 8.**  
(Note; only one of these switches may be set.  
All others must be set to the "OFF" position.)

- #1 switch manages one load.
- #2 switch manages two loads.
- #3 switch manages three loads.
- #4 switch manages four loads.
- #5 switch manages five loads.
- #6 switch manages six loads.
- #7 switch manages seven loads.
- #8 switch manages eight loads.
- #9 switch "OFF" sets outputs to logic 1  
placing this switch "ON" to logic 0.

(Note; must be "OFF" for RCT-00743 or  
RCT-01479 Ambulance Power Center System.)



### Maintains Battery Voltage/Current Level.

Unit monitors battery voltage and then remove up to eight loads on 30 second intervals.  
When voltage level is above set point unit will re-apply up to eight loads in 3 minute intervals.

**Trans. Switch:** Enables unit, permits load management.(12 VDC common @ 1 ma. sink)

**Inhibit Switch:** Inhibits unit from removing connected loads. (VDC common @ 1 ma. sink)

**Brake Switch:** Re-applies all connected loads, momentary input. (12 VDC @ 1ma. Source)

### **J1 Connector**

- #1 **Inhibit Switch:** Inhibits unit from removing connected loads. (VDC common @ 1 ma. sink)
- #2 **Trans. Switch:** Enables unit permits load management. (VDC common @ 1 ma. sink)
- #3 First On/Off.
- #4 Second On/Off.
- #5 Third On/Off.
- #6 Forth On/Off.
- #7 Fifth On/Off.
- #8 Sixth On/Off.
- #9 Seventh On/Off.
- #10 Eighth On/Off.
- #11 Battery Negative
- #12 Battery Positive
- #13 Discharge Signal. To Battery Negative 250 ma. Maxium.
- #14 **Service Brake** Re-applies all connected loads, momentary input. (12 VDC @ 1ma. source)
- #15 Start with all loads on when at Battery Negative.