

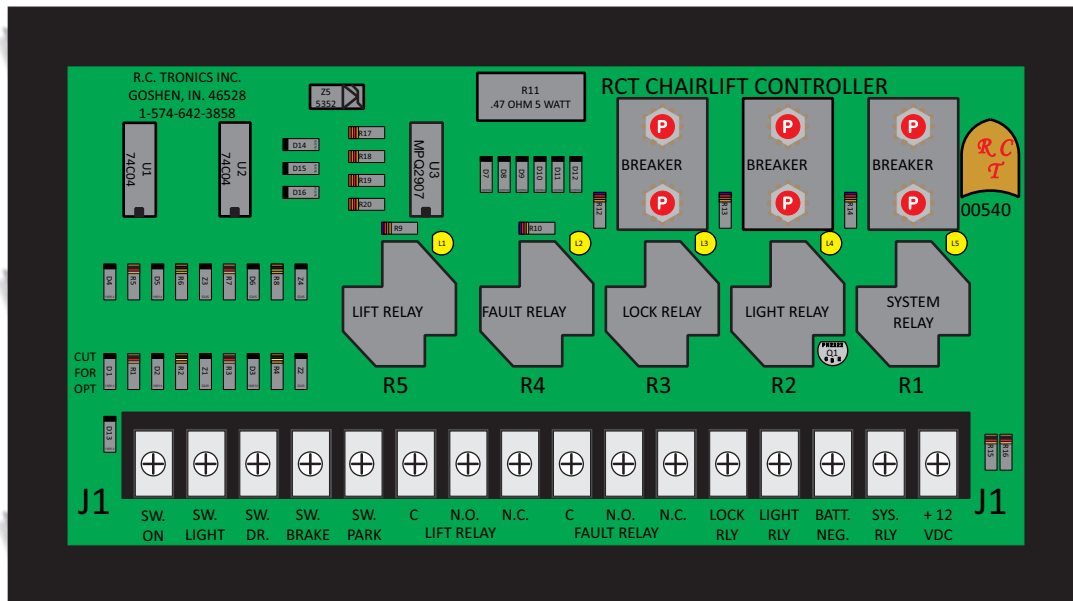
R. C. Tronics Incorporated

Specializing In Electronic Controls

2573 East Kercher Road
Goshen, Indiana 46528
Toll Free 1-866-457-7790

Phone 1-574-642-3857
Fax 1-574-642-3858
<http://www.rctronics.com>

RCT-00540 ADA Chair Lift Control



SW. ON-----Normally connected to switch, which operates to Battery Negative, Enables RCT-540.

SW. LIGHT-----Normally connected to +12 VDC, vehicle headlight switch. Cut J1 jumper, Below left of Relay R5. This input may be left open, light relay R2 will Operate when system is armed and door is opened.

SW. DR.-----Normally connected to door plunger switch, which operates to battery Negative when lift door is opened.

SW. BRAKE-----Normally connected to vehicle parking brake, which operates to Battery Negative.

SW. PARK----- Normally connected to vehicle transmission switch, which operates to Battery Negative.

LIFT RELAY----C = common terminal to N.O. (normally open). N.C. (normally closed) This relay #5 operates when all inputs are present and vehicle is deemed "Safe".

FAULT RELAY---C = common to terminal N.O. (normally open) N.C. (normally closed) This relay #4 operates when a condition exists and vehicle is deemed "Unsafe".

LOCK RELAY---Operates anytime system is armed or any input is present. Positive 12 VDC rated at 15 ampere.

LIGHT RELAY---Operates when inputs are correct. Used for platform lighting. Rated 12 VDC at 15 ampere.

BATT. NEG.-----Connect to battery negative. Use #16 AWG conductor. **THIS MUST BE WIRED DIRECT TO BATTERY, DO NOT SWITCH.**

SYS. RELAY-----Operates when SW. ON or SW. DR. is operated to battery negative. Positive 12 VDC rated 15 ampere.